

# BANDEN PLAN EUROPA

MEMBER OF THE KARGRO GROUP

MARANGONI 



**SUSTAINABLY  
ON THE  
ROAD**

Product catalogue







WWW.KARGROGROUP.COM

## Foreword

Welcome to the new brochure of Banden Plan Europa!

Since 1968, the Kargro Group has been a pioneer in circular tire recycling. With four specialized subsidiaries, we work together towards a sustainable future in the tire industry. In this brochure, you will find detailed information about treads, ringtreads, and the innovative treads from Marangoni and Recamic.

At Kargro, you will always find a large stock of usable casings for trade and retreading. Buyers inspect dismantled commercial vehicle tires at various companies daily. Approved casings are purchased, while discarded tires go to Kargro Recycling. With a modern fleet of 27 own, modern Euro-6 trucks and LZVs, we provide transport in the Benelux, Germany, and Northern France. In Montfoort, casings are sorted by size, brand, and quality, ensuring Kargro always has a large stock for worldwide export. We contribute to sustainability by promoting the reuse and recycling of tires.

Kargro Recycling specializes in the production of high-grade rubber powder and granulates. As the world's first tire recycling company, Kargro Recycling processes an annual 35,000 tons of truck tires. Two state-of-the-art recycling lines based in Nederweert, the Netherlands, benefit from over 30 years of experience, producing raw materials that achieve success all over the world.

Lintire specializes in collecting and circular processing of dismantled passenger car tires. After inspection, these tires are prepared for reuse, retreading or recycling. Lintire ensures an efficient and environmentally friendly supply chain by doubling or tripling tires for worldwide export.

Banden Plan Europa is a leading company in Europe in tire retreading. We offer customers high-quality, performance-oriented retreaded tires, made with innovative rubber compounds and treads from Marangoni and Recamic. These tires are suitable for various vehicle types and usage conditions. Banden Plan Europa has two modern factories in the Netherlands and Belgium, where we continuously work on delivering the highest quality tires.

By choosing Kargro, you not only choose high-quality products and services but also contribute to a greener future. We invite you to join us in promoting the circular economy and making a positive impact on the environment.

Enjoy reading!

Best regards,  
Sales Team Banden Plan Europa



# SUSTAINABLE TYRE SOLUTIONS

**With MARANGONI RINGTREAD 74% less CO<sub>2</sub> emissions,  
77% less resource consumption**

With the support of the Department of Industrial Engineering at the University of Trento, MARANGONI has determined an exemplary life cycle assessment for a retreaded 385/65R22.5 tyre that was retreaded with RINGTREAD BLACKLINE WSS 300 M. The results were compared with a new tyre for the same application.

According to the results of the life cycle assessment, retreaded tyres are more environmentally friendly than new tyres in all eleven categories examined. The following values were determined for the main categories in comparison to new tyres:

- CO<sub>2</sub> emissions (GWP/ Global Warming Index, calculated in kg) were **-74% lower** for the retreaded tyre
- RU-E (fossil resource impact index): **-77 %**
- RU-MM (resource impact index for raw material extraction): **-75 %**
- PM10 (particulate matter emissions): **-55 %**
- WS (water consumption): **-83 %**
- AP (acidification of precipitation): **-70 %**
- ODP (depletion of the ozone layer): **-74 %**

The life cycle assessment was carried out in accordance with the requirements of the ISO 14040 and ISO 14044 standards; the PCR (Product Category Rule) applied is that for tyres (UL10006) in accordance with ISO 14025. The SimaPro Version 9.4 Multi User software was used for the calculation.

## A SOLUTION FOR EVERY REQUIREMENT

RINGREAD is the only retreading system offering a **circular, double-countured and spliceless profile**: the re-treaded tyres manufactured using this technology are completely different from any others and are able to match or even exceed the performance and reliability of new high quality tyres.



### MORE FOR LESS

LOWER INITIAL COST,  
LOWER FUEL CONSUMPTION



### INCREASED RELIABILITY

AT THE TOP IN TERMS OF SAFETY AND  
OPERATIONAL EFFICIENCY



### MORE KILOMETERS

IMPROVED PERFORMANCES IN ALL  
ROAD CONDITIONS, MORE  
KILOMETERS AND GREATER COMFORT



### MORE GRIP

BETTER PERFORMANCE, MAXIMUM  
GRIP IN ALL ROAD CONDITIONS



### MORE OPTIONS

A SOLUTION FOR EVERY NEED



**BLACKLINE**, the evolution of the standard range, is the result of MARANGONI'S significant investments in the most modern mixing and moulding technology. In addition to the intrinsic benefits and performance of all RINGREAD rings, this product range has been developed with new compounds, especially selected and combined to guarantee performance that meets the highest market expectations concerning fuel consumption, life, grip in the dry and the wet and sturdiness in the most demanding on-off applications.

# CITY & COACH



## BLACKLINE BUS400



275/70R22.5  
315/70R22.5  
295/80R22.5

# WINTER



## BLACKLINE WS101



315/60R22.5  
275/70R22.5  
315/70R22.5  
295/80R22.5  
295/80R22.5

## BLACKLINE RDG101



295/60R22.5  
315/60R22.5  
315/70R22.5  
295/80R22.5  
315/80R22.5

## RDW MS6



315/70R22.5  
295/80R22.5  
315/80R22.5



## LONG HAUL & REGIONAL



BLACKLINE **RDL FE**



295/60R22.5

315/60R22.5

315/70R22.5

BLACKLINE **RDR HM3**



285/70R19.5

315/60R22.5

315/70R22.5

295/80R22.5

315/80R22.5

**RD2**



265/70R19.5

12R22.5

275/70R22.5

305/70R22.5

## ON/OFF & OFFROAD



BLACKLINE **MIX202**



13R22.5

315/70R22.5

295/80R22.5

315/80R22.5

**RDY-HM**



13R22.5

295/80R22.5

315/80R22.5

**MZH**

13R22.5

315/80R22.5



TRAILER



BLACKLINE WSS	RZY-HM	RSSY3
265/70R19.5 <sup>(4)</sup>	11R22.5	385/65R22.5
445/45R19.5 <sup>(6)</sup>	12R22.5	425/65R22.5
385/55R22.5 <sup>(6)</sup>	295/80R22.5	445/65R22.5
315/60R22.5 <sup>(4)</sup>	315/80R22.5	
385/65R22.5 <sup>(6)</sup>		
275/70R22.5 <sup>(4)</sup>		
315/70R22.5 <sup>(4)</sup>		
295/80R22.5 <sup>(4)</sup>		
315/80R22.5 <sup>(4)</sup>		

( ) = grooves

LONG HAUL & REGIONAL



ON/OFF & OFFROAD



ECOLINE EDR2	ECOLINE EDM4
315/70R22.5	295/80R22.5
295/80R22.5	315/80R22.5
315/80R22.5	



# SUSTAINABLE TYRE SOLUTIONS



## TREADS

# LONG HAUL & REGIONAL



**ZT**



**315/70R22.5**

**315/80R22.5**

**MS6**



**315/70R22.5**

**315/80R22.5**

**MS817**



**265/70R19.5**

**12.00R20**

**315/70R22.5**

**295/80R22.5**

**315/80R22.5**



PRL a promise of quality - high quality premium flat tread for performance that reveals that of new tyres.

# CITY & COACH



# ON/OFF & OFFROAD



# PORT



# FORKLIFT



**BUS103**



**275/70R22.5**

**295/80R22.5**

**DY3**



**13R22.5**

**295/80R22.5**

**315/80R22.5**

**EM PORT**

**13R22.5**

**315/80R22.5**

**PDO ZH**

**11.00R20**

**12.00R20**

**315/80R22.5**

LONG HAUL & REGIONAL



UNITREAD tread utilizes primarily classical treads designs - particular for the cost-oriented retreader.

U729

BUTE

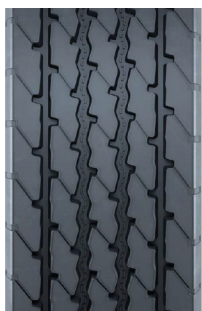


315/70R22.5

385/65R22.5

315/80R22.5

ON/OFF & OFFROAD



UZY2

UDY3L

BMM

BUZYL



295/80R22.5

13R22.5

13R22.5

315/80R22.5

295/80R22.5

315/80R22.5

315/80R22.5



## **Banden Plan Europa B.V.**

Heeswijk 135  
3417 GP, Montfoort  
the Netherlands

E-mail: [info@bandenplan.nl](mailto:info@bandenplan.nl)

Phone: +31 348 472 090

## **Tyre Plan Europe B.V.**

Magermanse Heide 7  
2920, Kalmthout  
Belgium

Email: [info@bandenplan.nl](mailto:info@bandenplan.nl)

Phone: +32 036 677 185



The information in this brochure has been carefully compiled. Banden Plan Europa is not liable for any errors or omissions. Copyright: © 2025 Banden Plan Europa. All rights reserved. Our General Terms and Conditions for the business market of the **VACO** Trade Association apply to all our deliveries and services. These conditions are filed with the Chamber of Commerce in The Hague under file number 40407521 on June 17, 2010. Please visit our website to explore our products and services on: [www.bandenplaneuropa.nl](http://www.bandenplaneuropa.nl)